

Measles and rubella monthly update— WHO European Region

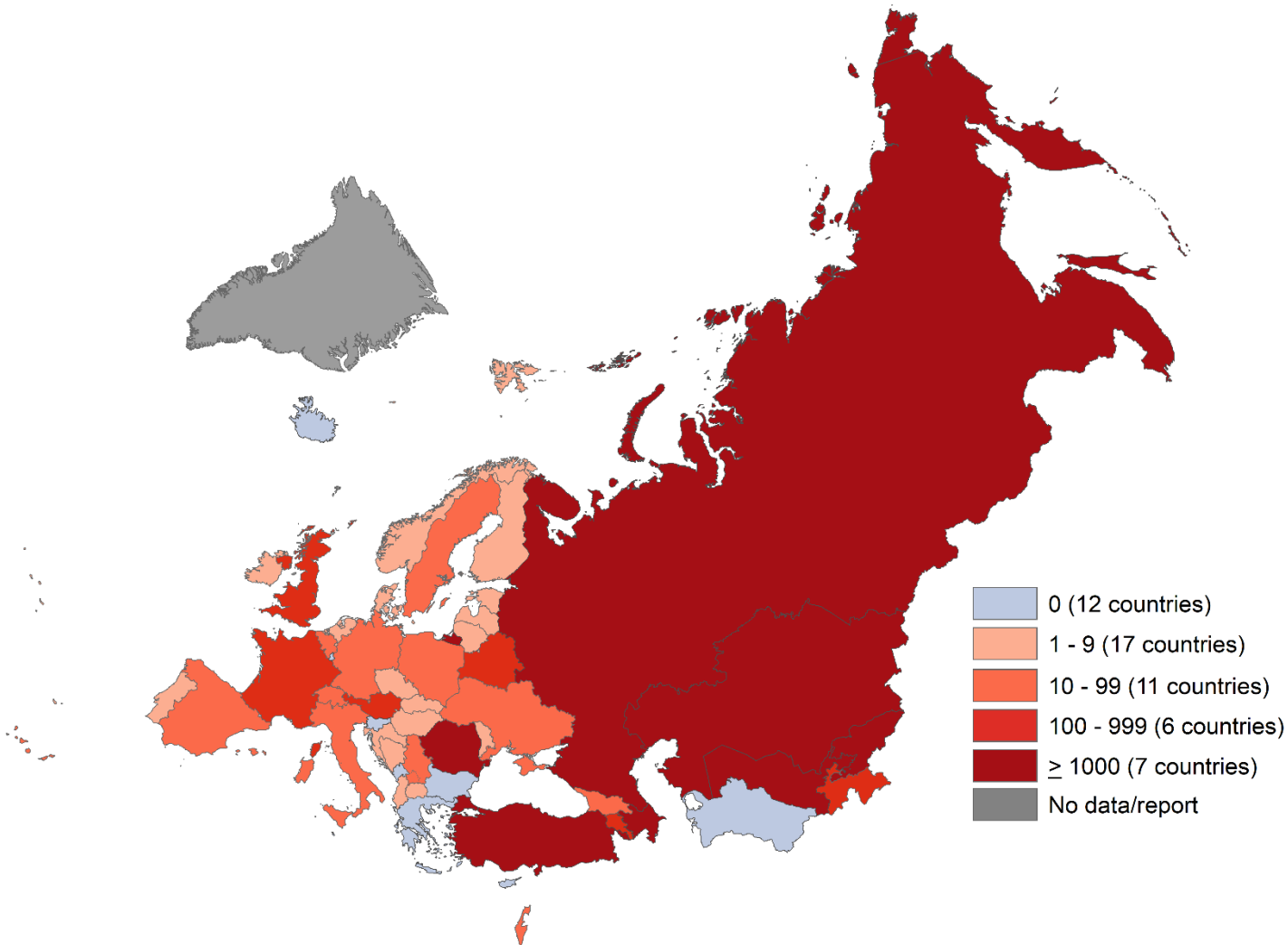


Vaccine-preventable Diseases and Immunization
Division of Communicable Diseases, Environment and Health

Data as of 10 January 2024

Measles Updates including 2023

Measles cases—WHO European Region, December 2022–November 2023

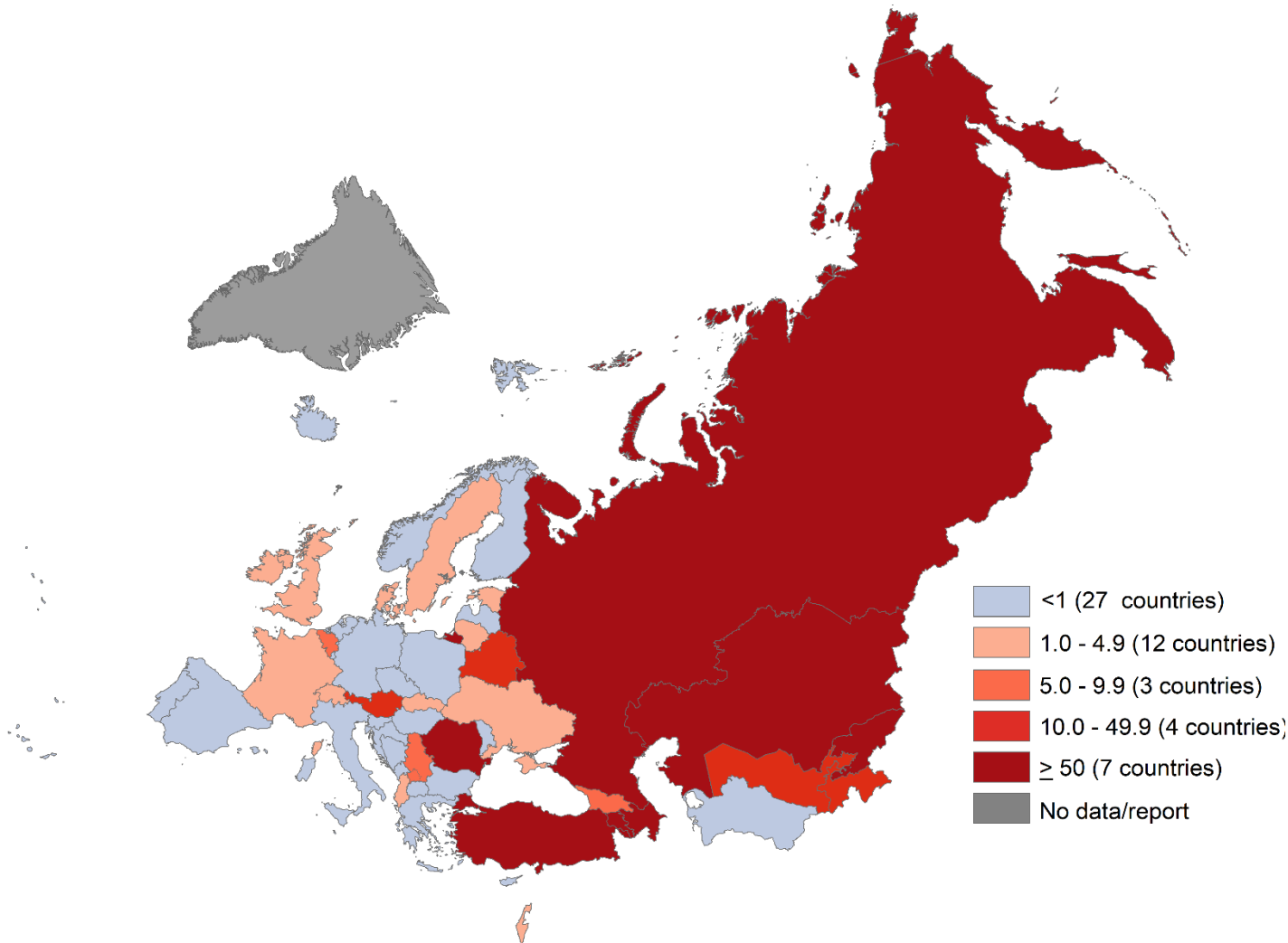


Top 10 countries	
Country	Cases
Kazakhstan	13677
Russian Federation	10710
Kyrgyzstan	5452
Türkiye	4584
Azerbaijan	3316
Romania	1714
Uzbekistan	1026
Armenia	518
Tajikistan	310
United Kingdom	183

41 (77%) countries reported measles cases in the rolling 12-months.

Disclaimer: The boundaries and names shown and the designations used on this map do not imply the expression of any opinion whatsoever on the part of the World Health Organization concerning the legal status of any country, territory, city or area or of its authorities, or concerning the delimitation of its frontiers or boundaries. Dotted and dashed lines on maps represent approximate border lines for which there has not yet been full agreement. © WHO 2024. All rights reserved.

Measles incidence per million population— WHO European Region, December 2022–November 2023



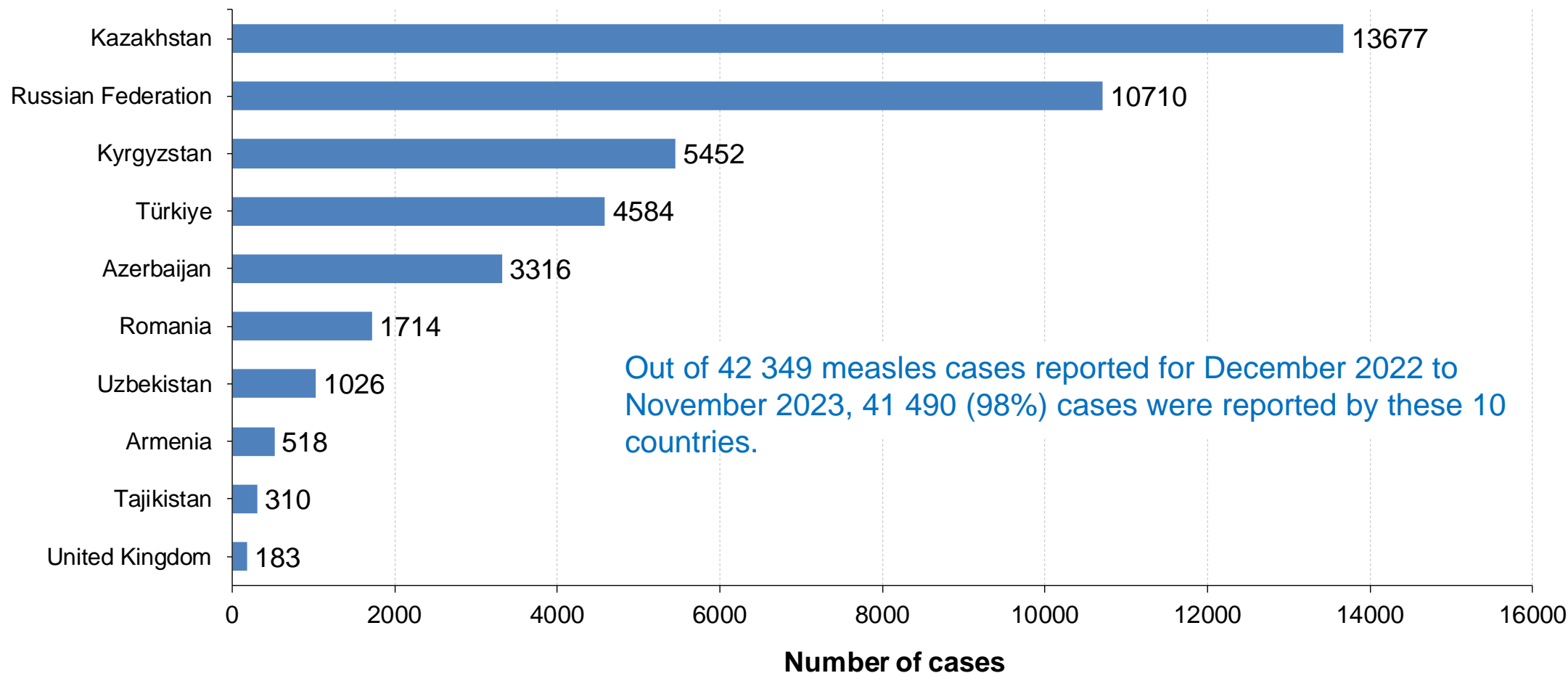
Top 10 countries		
Country	Cases	Incidence
Kyrgyzstan	5452	809.46
Kazakhstan	13677	697.57
Azerbaijan	3316	318.46
Armenia	518	186.47
Romania	1714	86.16
Russian Federation	10710	74.15
Türkiye	4584	53.42
Tajikistan	310	30.56
Uzbekistan	1026	29.18
Austria	172	19.20

Disclaimer: The boundaries and names shown and the designations used on this map do not imply the expression of any opinion whatsoever on the part of the World Health Organization concerning the legal status of any country, territory, city or area or of its authorities, or concerning the delimitation of its frontiers or boundaries. Dotted and dashed lines on maps represent approximate border lines for which there is no yet full agreement. © WHO 2024. All rights reserved.

Population source: United Nations, Department of Economic and Social Affairs, Population Division. World Population Prospects: The 2022 revision.

Data source: Monthly aggregated and case-based data reported by Member States to WHO/Europe directly or via ECDC/TESSy data as of 10 January 2024

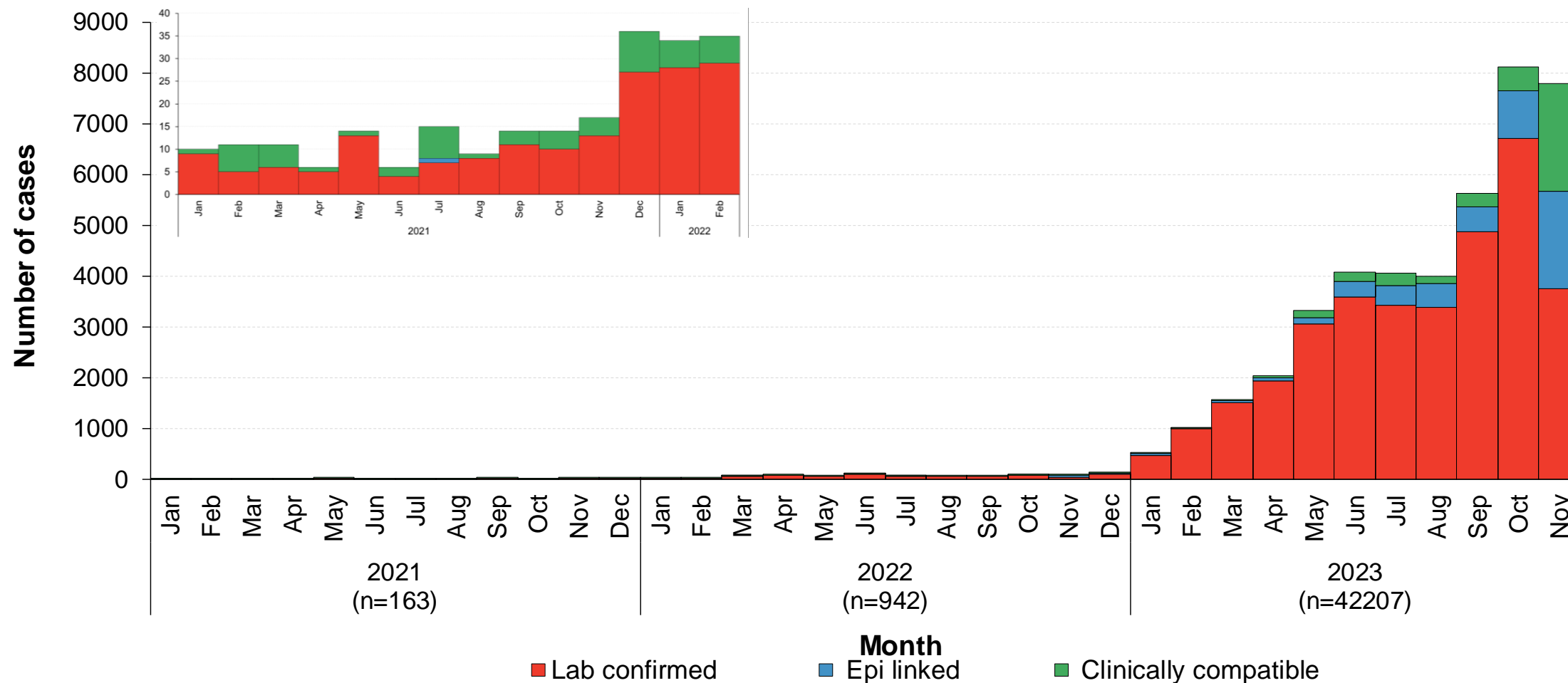
Ten countries with the highest numbers of measles cases— WHO European Region, December 2022–November 2023



41 (77%) countries reported measles cases in the rolling 12-months.

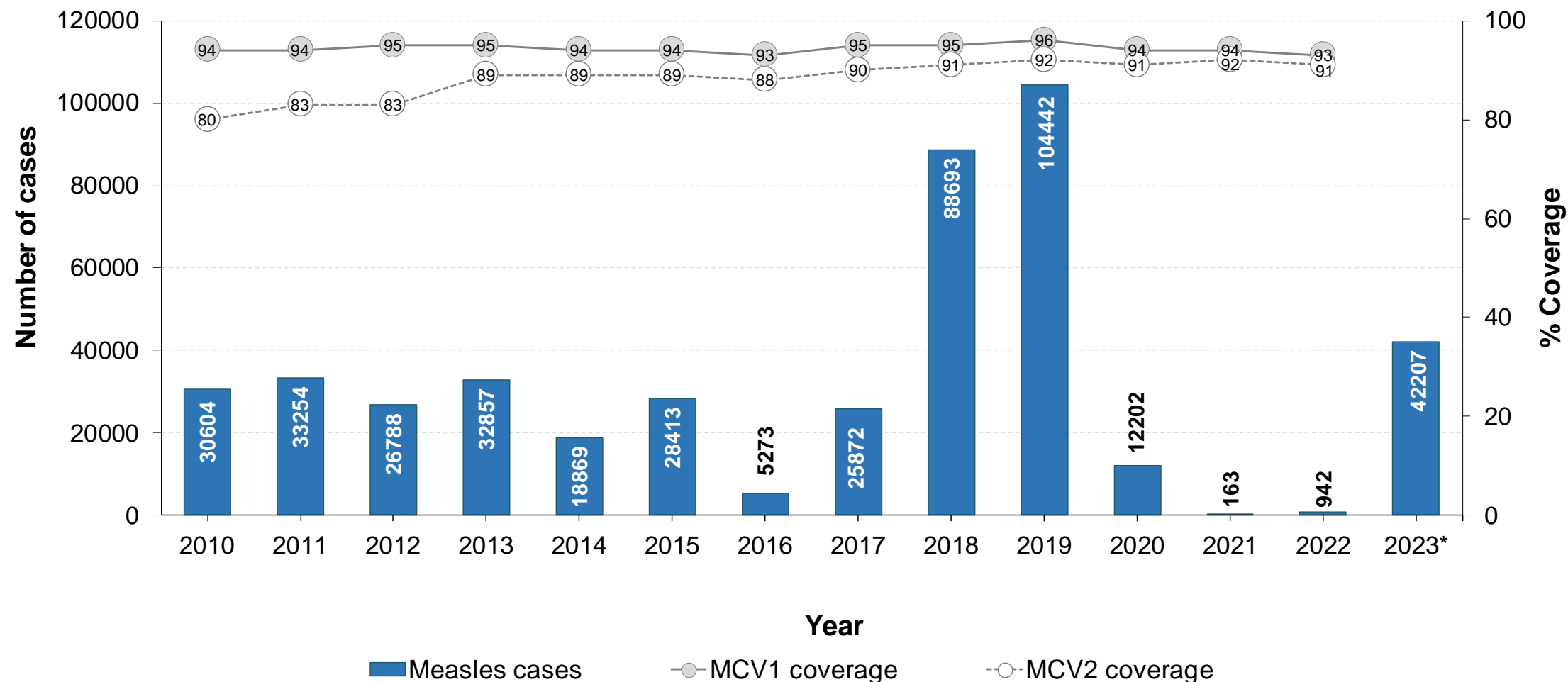
Data source: Monthly aggregated and case-based data reported by Member States to WHO/Europe directly or via ECDC/TESSy data as of 10 January 2024

Measles cases by month—WHO European Region, 2021–November 2023



Criteria for date of case inclusion may differ in accordance with Member States' surveillance systems.

Measles cases, MCV1 and MCV2 coverage by year— WHO European Region, 2010–November 2023



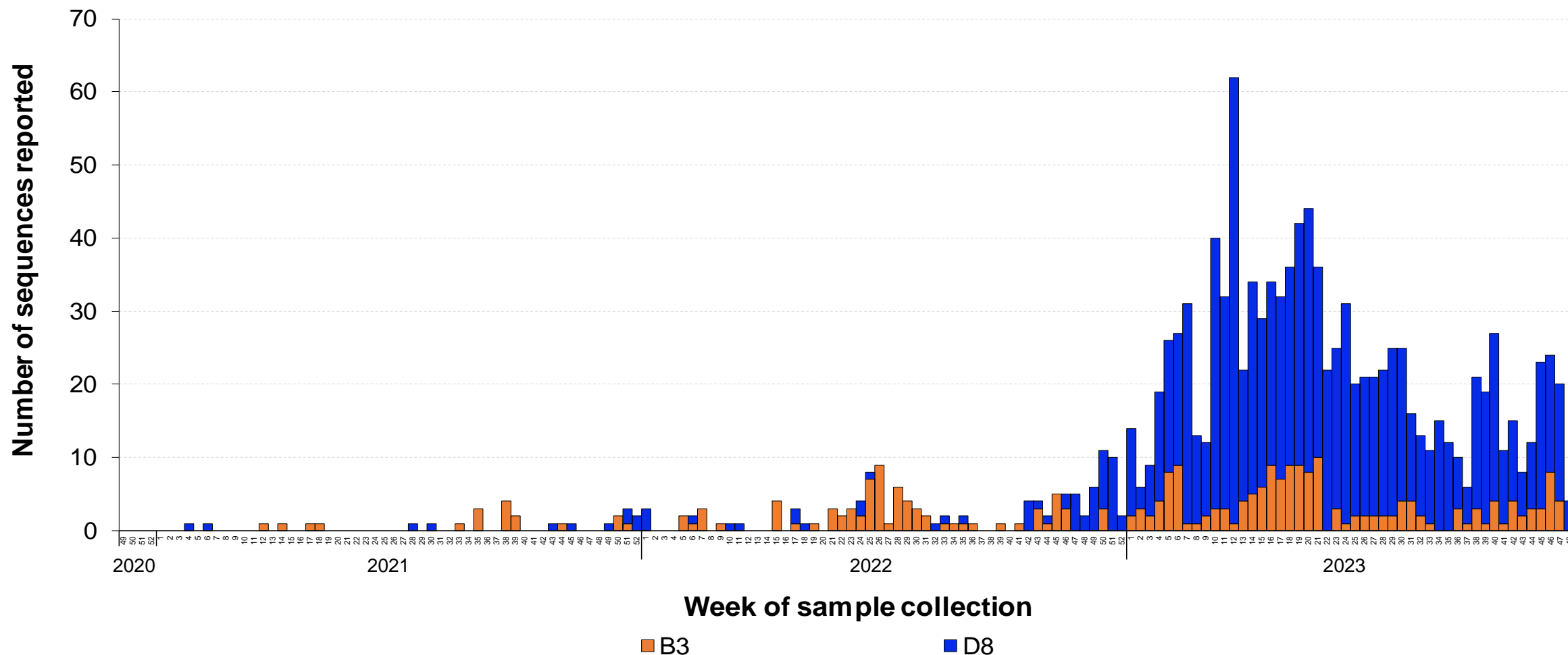
MCV1: first dose of measles-containing vaccine
MCV2: second dose of measles-containing vaccine

*January –November 2023

Data source: 1) Measles cases – monthly aggregated and case-based data reported by Member States to WHO/Europe or via ECDC/TESSy as of 10 January 2024.

2) MCV1 and MCV2 coverage - WHO/UNICEF Estimates of National Immunization Coverage (WUENIC) as of 26 June 2023.

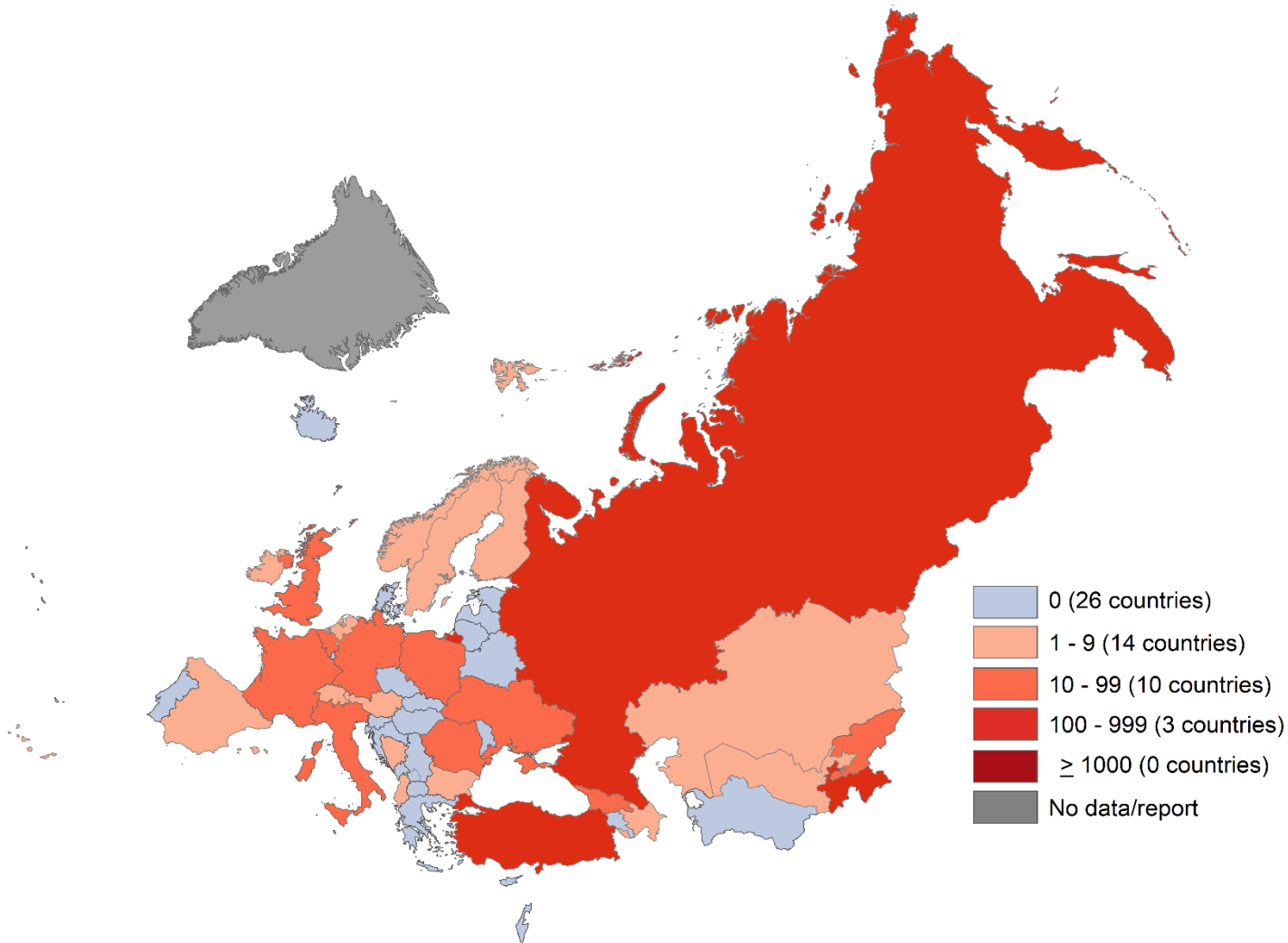
Measles genotypes by week of sample collection— WHO European Region, week 49, 2020 to week 48, 2023



Measles

Latest update for 2022

Measles cases—WHO European Region, 2022

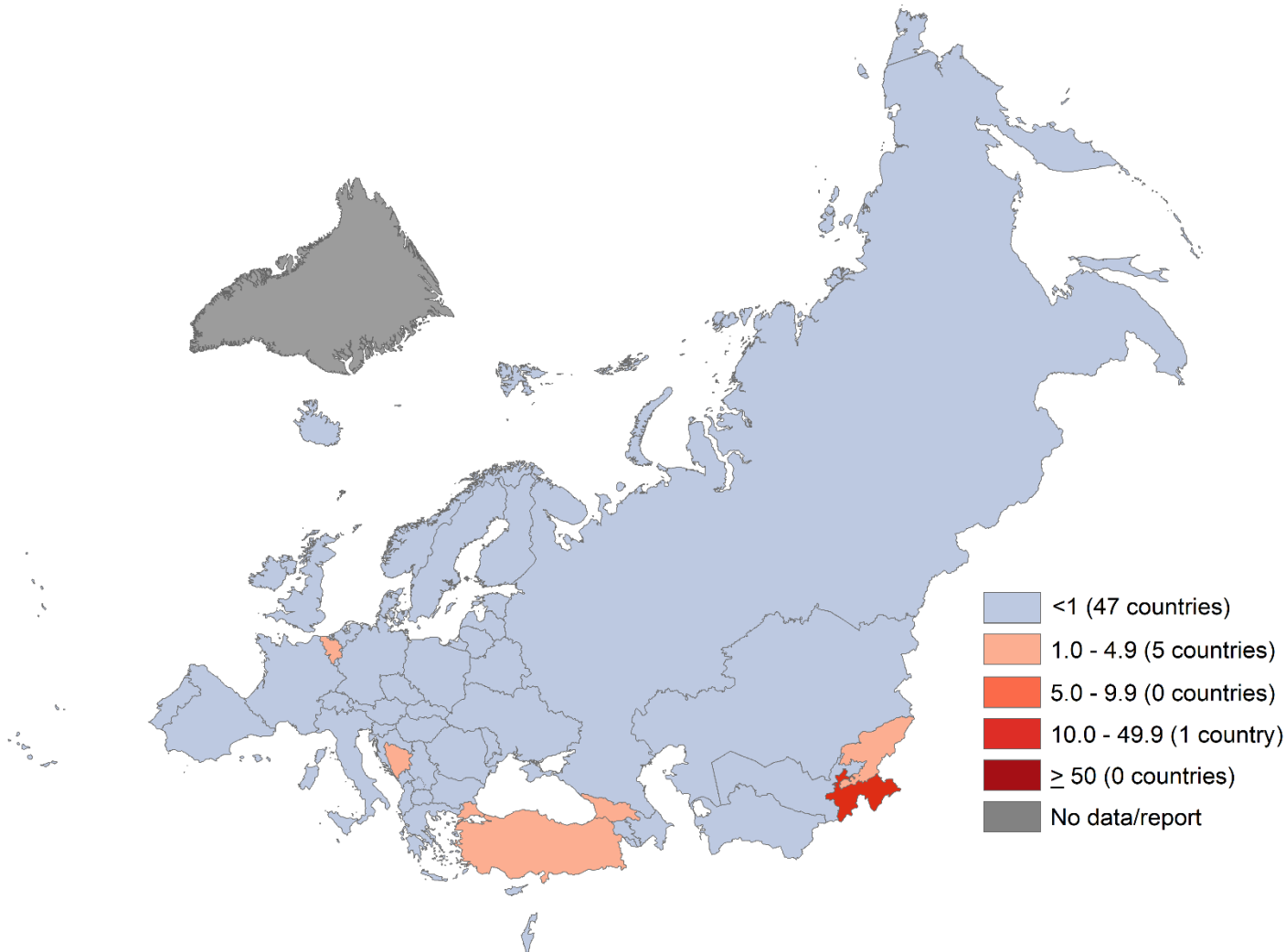


Top 10 countries	
Country	Cases
Tajikistan	451
Türkiye	128
Russian Federation	117
United Kingdom	50
Poland	35
Kyrgyzstan	23
France	19
Belgium	17
Germany	15
Italy	15

27 (51%) countries reported measles cases for 2022.

Disclaimer: The boundaries and names shown and the designations used on this map do not imply the expression of any opinion whatsoever on the part of the World Health Organization concerning the legal status of any country, territory, city or area or of its authorities, or concerning the delimitation of its frontiers or boundaries. Dotted and dashed lines on maps represent approximate border lines for which there has not yet been full agreement. © WHO 2024. All rights reserved.

Measles incidence per million population— WHO European Region, 2022



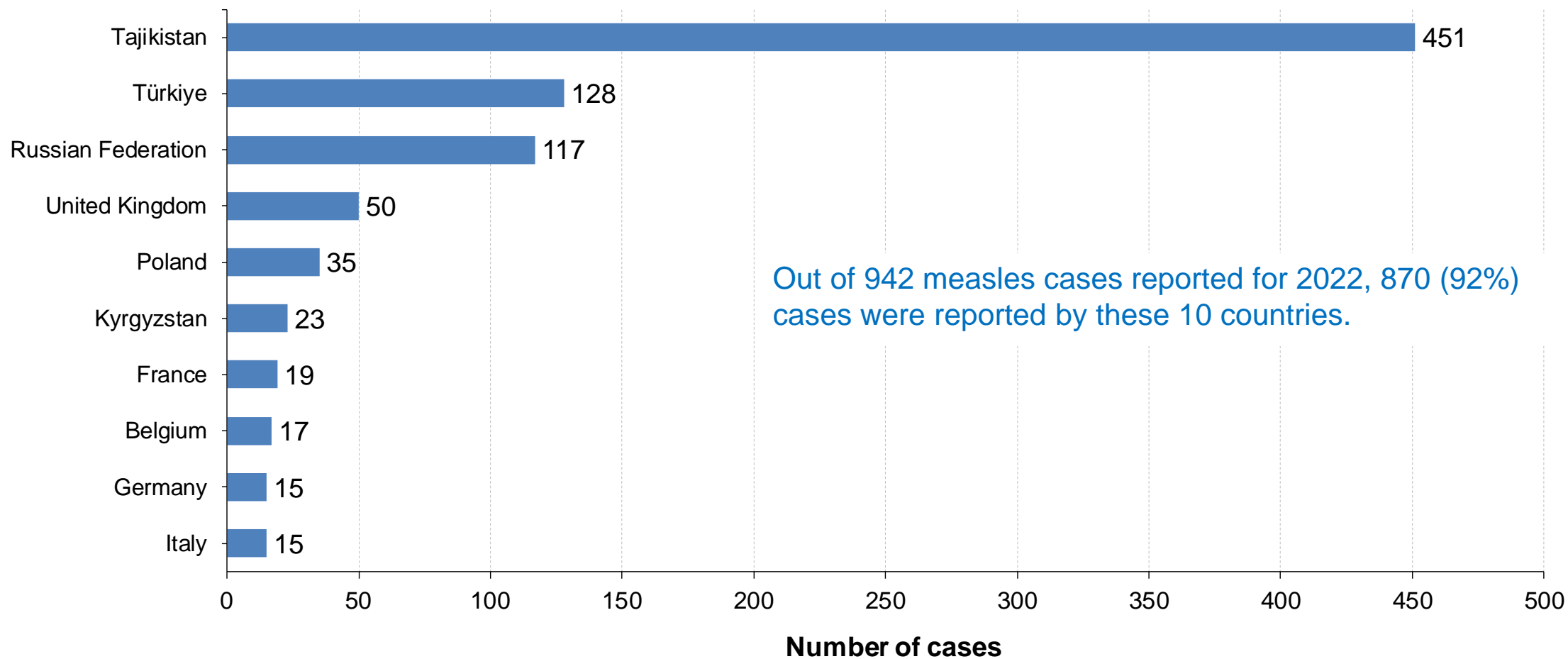
Top 10 countries		
Country	Cases	Incidence
Tajikistan	451	45.31
Kyrgyzstan	23	3.47
Georgia	12	3.20
Bosnia and Herzegovina	6	1.86
Türkiye	128	1.50
Belgium	17	1.46
Poland	35	0.88
Russian Federation	117	0.81
United Kingdom	50	0.74
Romania	11	0.56

Disclaimer: The boundaries and names shown and the designations used on this map do not imply the expression of any opinion whatsoever on the part of the World Health Organization concerning the legal status of any country, territory, city or area or of its authorities, or concerning the delimitation of its frontiers or boundaries. Dotted and dashed lines on maps represent approximate border lines for which there has not yet been full agreement. © WHO 2024. All rights reserved.

Population source: United Nations, Department of Economic and Social Affairs, Population Division. World Population Prospects: The 2022 revision.

Data source: Monthly aggregated and case-based data reported by Member States to WHO/Europe directly or via ECDC/TESSy data as of 10 January 2024

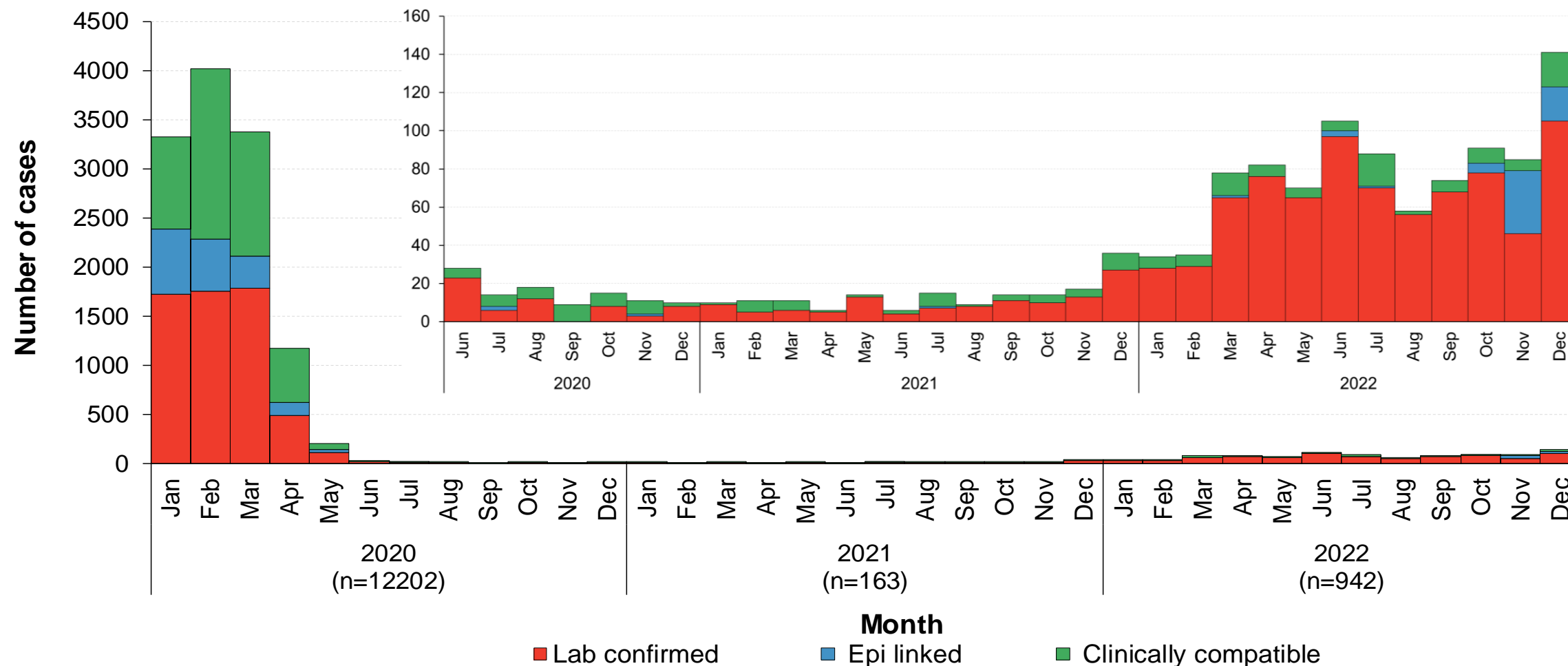
Ten countries with the highest numbers of measles cases— WHO European Region, 2022



27 (51%) countries reported measles cases for 2022.

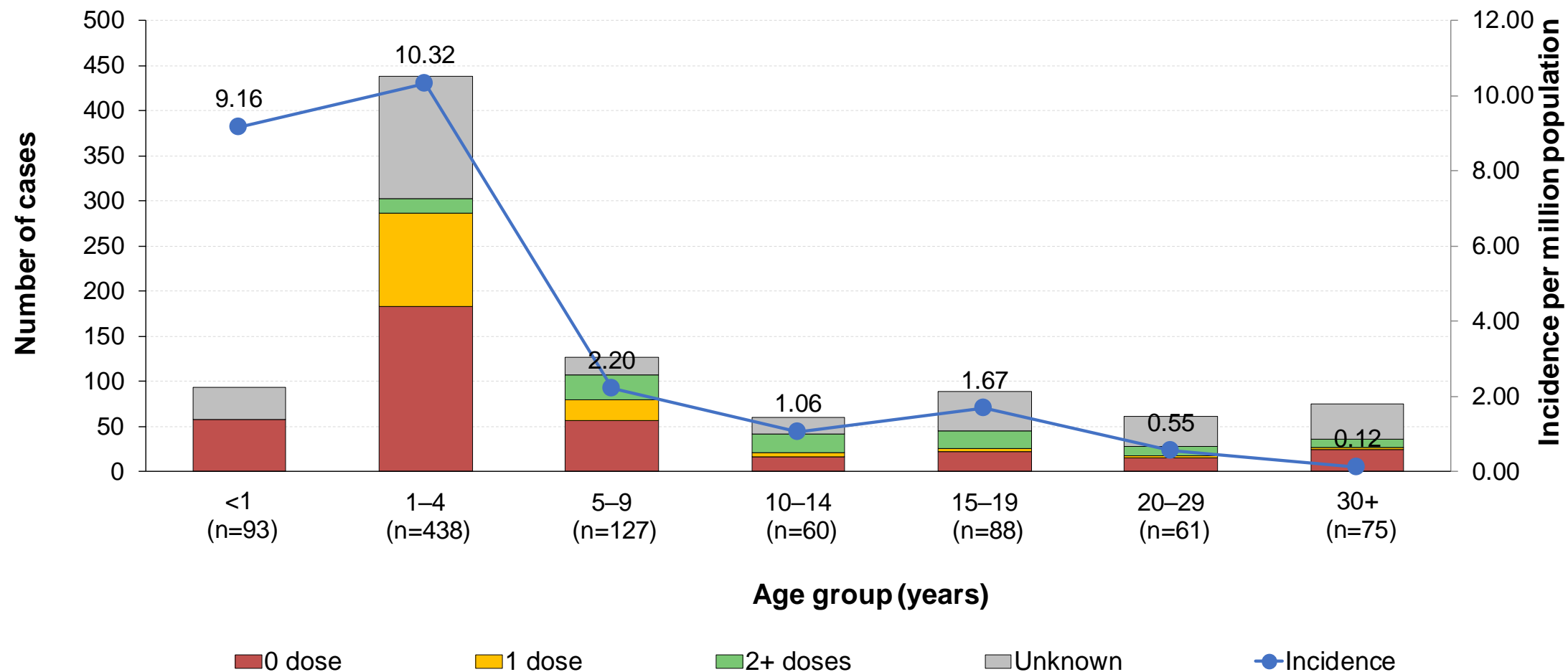
Data source: Monthly aggregated and case-based data reported by Member States to WHO/Europe directly or via ECDC/TESSy data as of 10 January 2024

Measles cases by month—WHO European Region, 2020–2022



Criteria for date of case inclusion may differ in accordance with Member States' surveillance systems.

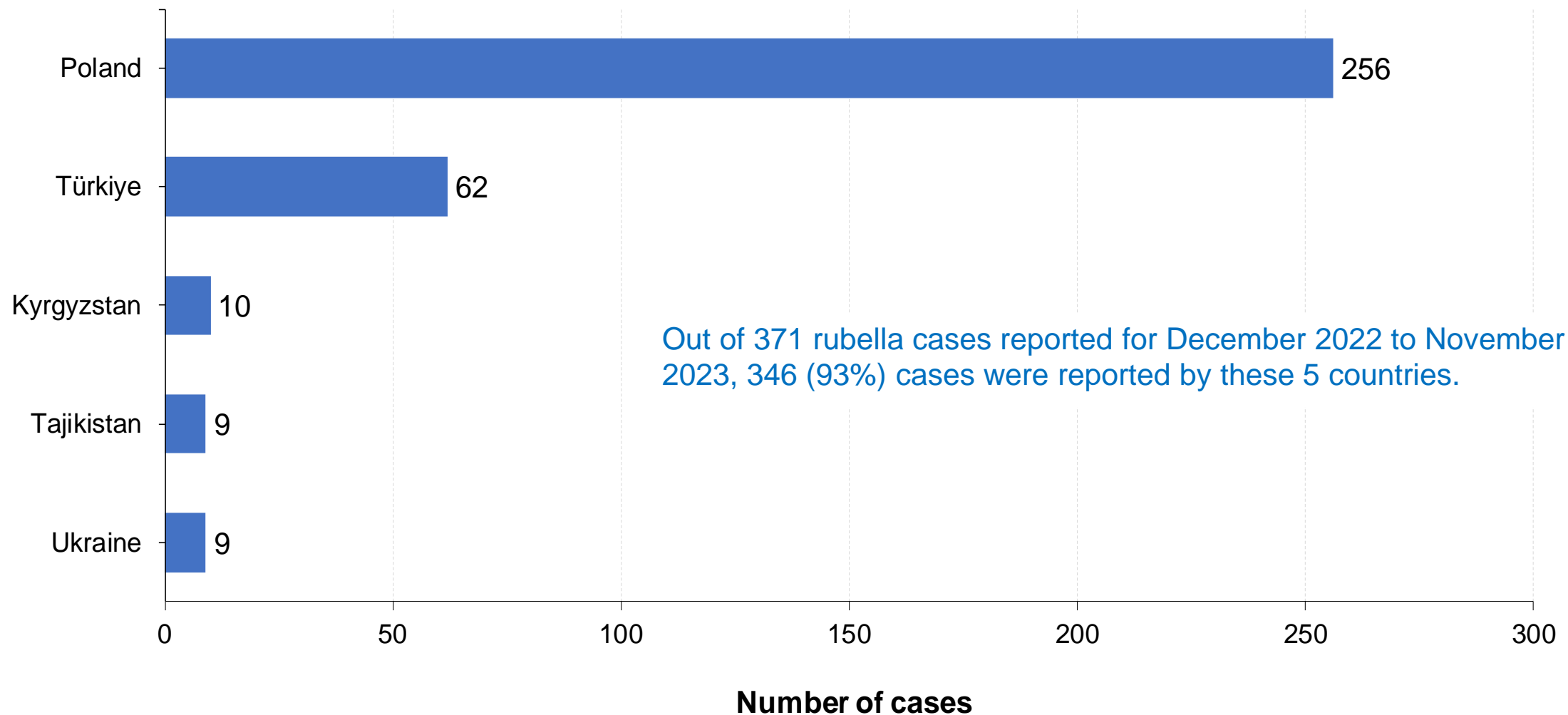
Measles cases and incidence by age group and vaccination status—WHO European Region, 2022



Rubella

Updates including 2023

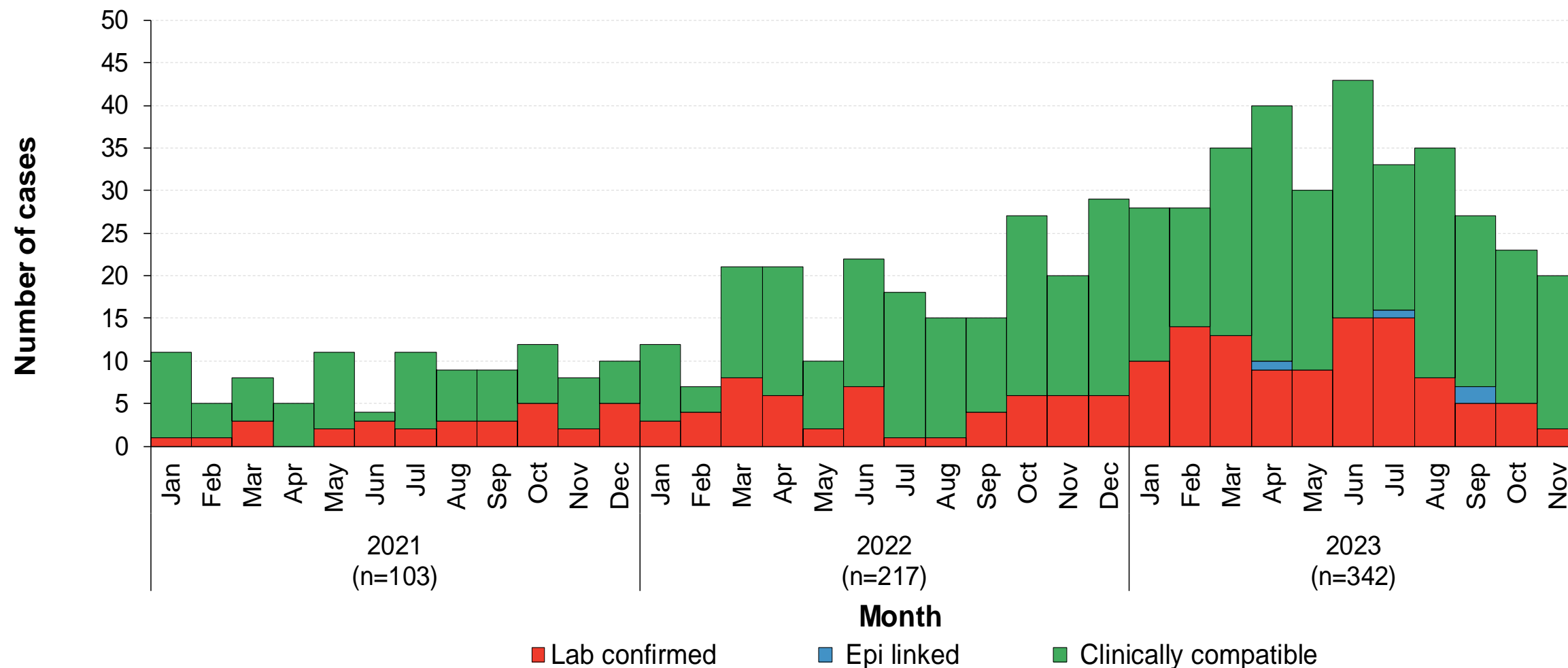
Five countries with the highest numbers of rubella cases— WHO European Region, December 2022–November 2023



16 (32%) countries reported rubella cases in the rolling 12-months.

Data source: Monthly aggregated and case-based data reported by Member States to WHO/Europe directly or via ECDC/TESSy data as of 10 January 2024

Rubella cases by month—WHO European Region, 2021–November 2023

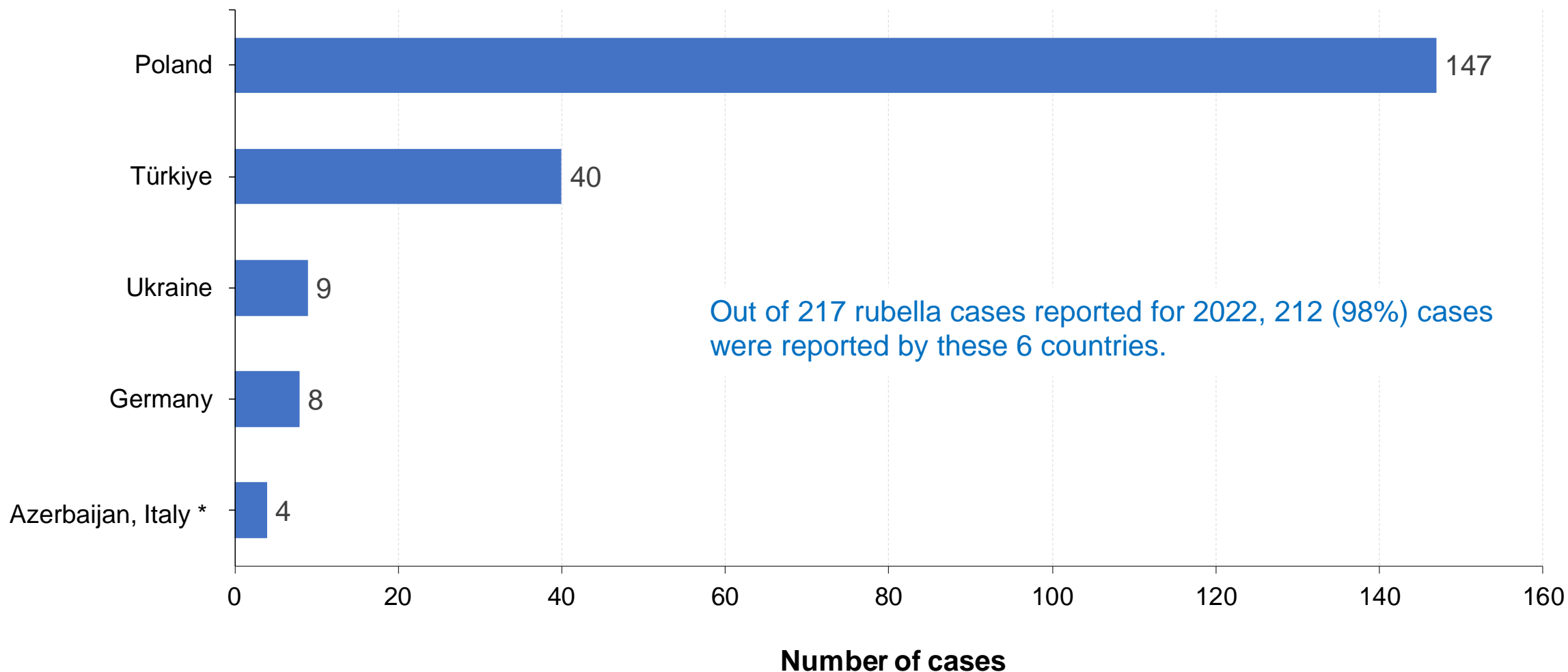


Criteria for date of case inclusion may differ in accordance with Member States' surveillance systems.

Rubella

Latest update for 2022

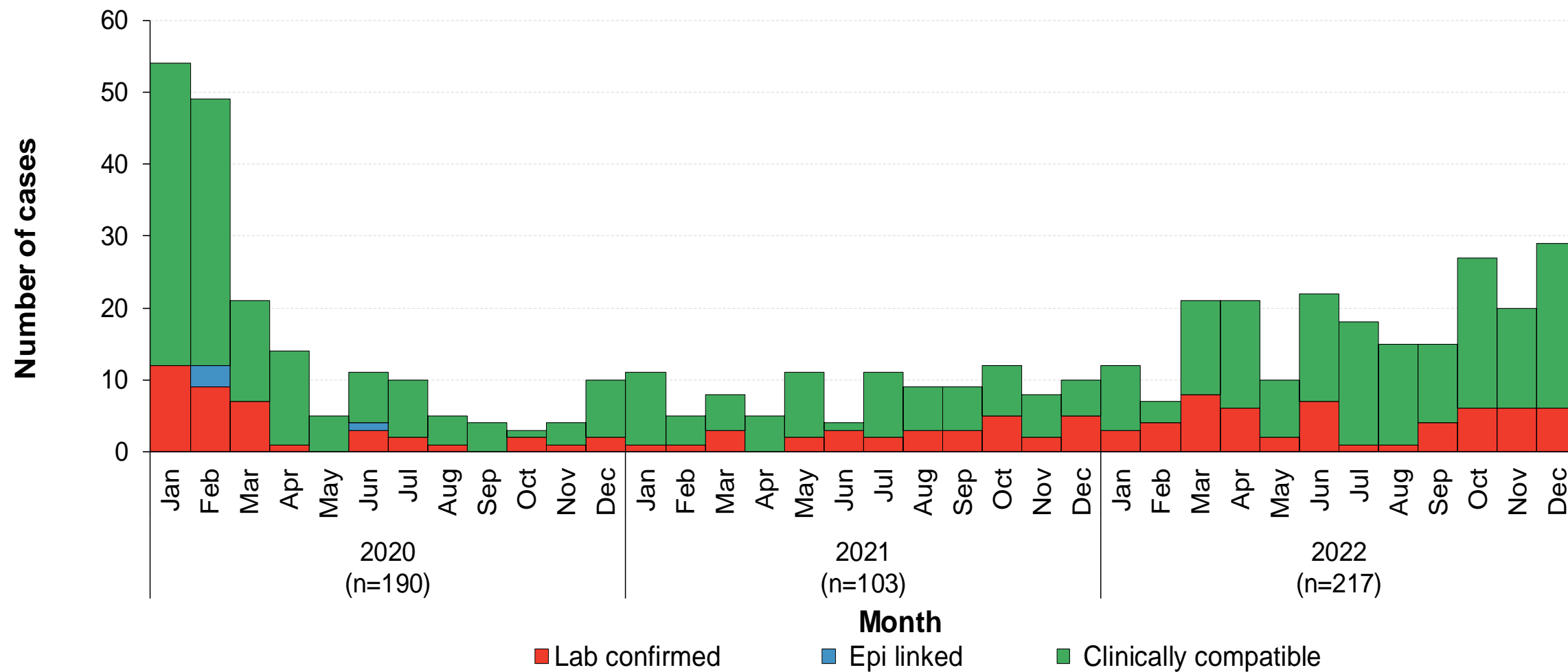
Five countries with the highest numbers of rubella cases— WHO European Region, 2022



*2 countries had four cases each for 2022.
10 (20%) countries reported rubella cases for 2022.

Data source: Monthly aggregated and case-based data reported by Member States to WHO/Europe directly or via ECDC/TESSy data as of 10 January 2024

Rubella cases by month—WHO European Region, 2020–2022



Criteria for date of case inclusion may differ in accordance with Member States' surveillance systems.

Links to measles and rubella information

- WHO EpiData
<https://www.who.int/europe/teams/vaccine-preventable-diseases-immunization/who-epidata>
- Country slides for measles and rubella
<https://www.who.int/teams/immunization-vaccines-and-biologicals/immunization-analysis-and-insights/surveillance/monitoring/provisional-monthly-measles-and-rubella-data>
- WHO EpiBrief
<https://www.who.int/europe/teams/vaccine-preventable-diseases-immunization/who-epibrief>